

Greetings all,

Wishing you all a very happy, healthy and prosperous New Year. We normally write this newsletter about tent news and updates on some of our ongoing projects around the world. However in this newsletter we want to focus for the first time more on the tents, platforms and interiors and how to integrate these components with the environment.

To start with, we have visited many clients tent sites doing evaluations for them and most times we have found that little thought has gone into the placement of the tents. It is assumed that one just constructs a simple wooden deck to fit the tent on and place it in a convenient spot on the land – usually a flat piece of land. The deck is the integral and very important component, which is the vehicle that allows for the ‘marriage’ and integration between the environment and the living space within the tent.

Living in luxury under canvas is a romance unto itself and is supposed to traditionally bring us closer to nature and it is to this that one must aspire towards. It is best to first take inventory (stock) of all the natural assets of the land/property – such as hills, cliffs, valleys, overhangs, rivers, river beds, rocks, boulders, ocean front, dams, lakes, views, caves, trees and other vegetation. It is these features that one must seek out when one is looking for sites to place the tents. It is understood that some sites do not have many features and in this case one has to get even more creative to try and create the ambiance desired. One also needs to take heed of the prevailing local weather conditions in placing the tent in an effort to minimize the exposure and impact of the tent to harsh conditions and in so doing, extending the longevity of the tent. With this all in mind, seek out the best sites on the land for the tent/s placement and mark the site/s.

The next step is the deck design; it is best design the deck that it is big enough to allow for ample outdoor living space for chairs, table,

chaise lounges, day beds, outside shower, jacuzzi's, splash pool etc. (as required)

Decks that are square, rectangular and just conform to the shape of the tent footprint do little to enhance the ambiance of the tent or help it blend into the environment.

Whenever possible try to integrate the deck with the natural assets found on the land such as described above) – Example; Build the deck around a prominent boulder or have a shade tree growing through deck that will allow for shade with table and chairs.

Tent decks can be built that the front of the deck is extending over a cliff or valley with the front supports counter-levered back to the cliff or valley wall.

It is most likely that with more than one tent, each tent site will have different natural assets which will ultimately result (if our suggestions are taken into consideration) in each tent having its own deck design, atmosphere and unique look.

The deck can also be constructed over water with a boat dock allowing for a more unusual lake or ocean experience.

In instances such as these, one can also do part of the outside deck with a glass inlay that can be under-lighted at night to create a close safe connection with nature's nightly nuances.



The decks might need to be elevated in some instances, to a higher level to create the connection with the natural assets found on the land.

To minimize the environmental impact on the ground, elevated wooden walkways can be used between tents for access – this can be done in a way that it weaves through some of the natural features of the land.

Keep in mind that the cost of the tent or the deck does not constitute luxury; luxury is constituted by the tent/deck design, space, ambiance, layout of interiors and service offered.

In mentioning 'space', there has been a steady increase in the popularity of larger space tents, which has been most commonly found in our Tent Pavilion Layouts – This consists of any combination of the Kambaku Family of tents, in any quantity desired.

Tent Pavilions have two or more tents on a single deck that can be split into various levels if so required.

Tent Pavilions can be used as an accommodation unit (example 2 x Kambaku Tents (50 M<sup>2</sup> / 512 Ft<sup>2</sup> each) one for Dining/Living and the other for Bathroom with the Kingfisher Tent (40 M<sup>2</sup> / 430 Ft<sup>2</sup>) being the bedroom). Alternatively they can be used for a 'Welcome Center' with reception office, bar, restaurant, lounge, library etc.



There is so much one can do creatively with the deck design that will make a huge difference to the tent ambiance and environs without spending a fortune.

If one gets the creative juices going on the tent/deck/environment concept, you will find a whole new vision with no limits on what one can do without too much effort or cost.

The interiors as mentioned earlier also play a big part and role in the ambiance of the tent. The best rule of thumb when planning the interiors is “keep it simple, keep it elegant and minimize clutter”. An open plan in the tents works well and if one does require a partition it is best to use a simple fold-up room divider that can be put out of the way when not needed.



When choosing furniture, it is best to look for items that have the smallest ‘footprint’ but without compromising on style and elegance. Remember that living under canvas in close contact to nature with elegant stylish interiors is sexy and romantic, so special attention should be given to the furniture & interiors and how they are laid out. Even though we have different tastes, try to avoid chunky bulky furniture and interior accessories and focus on simple elegance. It is best to first do a large scale drawing of the tent floor plan and draw in your furniture choices to scale to find out how much living and free space will be left over to make living in the tent most comfortable.

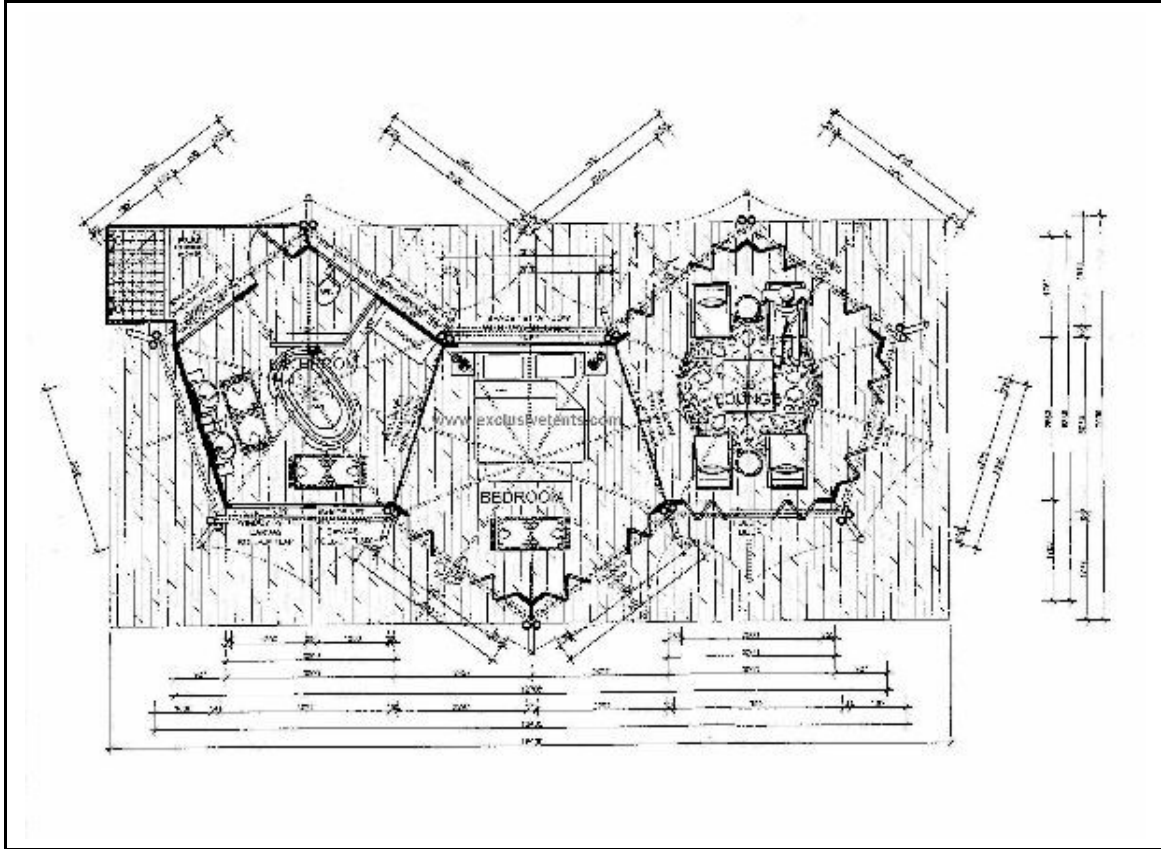


Examples of such furniture can be seen at [www.barefootinteriors.com](http://www.barefootinteriors.com)

The reason why tent placement is also important, apart from the reason given above, it is the beauty on the outside that becomes the art and tapestry on the inside of the tent when the windows, doors or even walls are open. This together with the fact that the tents are living moving structures just adds to the living ambiance of living under canvas.

Lastly, this snippet of news; our first new tent design for 2009 has just been released but is not quite yet ready for sale until around March.

Named the Shingwedzi Tent after another legendary African elephant, it has a spacious 65m<sup>2</sup> (700 sq ft) interior and has a rather unique design layout.



As always, we strive to bring you the best in design innovation and style.

Take care.

From us all here at Exclusive Tents  
[www.exclusivetents.com](http://www.exclusivetents.com)